

# SONY

## SNC-VM772R

Network Mini Dome 4K Camera

4K Outdoor IR (IP66) Ruggedized Camera with Large-sized Exmor R™ CMOS Sensor



### Product Highlights

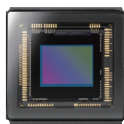
- EXMOR R back illuminated sensor for great sensitivity of 0.1 lux in color
- 4K (3840 x 2160) H.264 with region of interest coding for bandwidth and storage efficiencies
- 20MP Evidence shot for greater detail (5472 x 3648)
- 2.9X optical zoom lens from 70.7 degrees to 27.5 degrees
- Optical image stabilization for full resolution capture
- View-DR® Technology for wide dynamic range of 90dB

# 4K

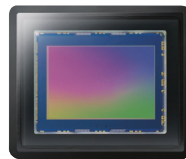
### NEW FEATURES

#### Extraordinary sensitivity with 4K

- 4K/30 fps video footage at a minimum illumination of 0.06 lx thanks to the Exmor R, 20 megapixel large-sized 1.0-type back-illuminated CMOS sensor, high-speed image processing engine, and high-quality zoom lens, allowing you to capture detail rich 4K video footage, even in near darkness



1/2.9-type  
Full HD



1.0-type  
**Exmor R**  
for SNC-VM772R/4K

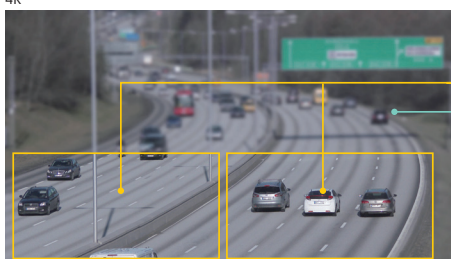
#### Automatic selection of picture settings

- **Intelligent Scene Capture** to automatically adjust and adapt the picture's brightness and color, depending on time of day, weather and lighting conditions to achieve the best picture quality. To further support all of the varying conditions and picture preferences, manual setting modes are available, or predefined picture settings can be scheduled or recalled to record at specific times, or based on external triggers, or lighting conditions

#### A variety of signal outputs

- **Intelligent Coding** to keep specific areas of interest in the scene clear and crisp, while lowering the image quality of the other parts using a high compression ratio, allowing the overall bitrate for the entire image to be reduced by up to 50% (4K/30 fps, areas of interest 30%) therefore helping to minimize storage costs

#### Captured Image 4K



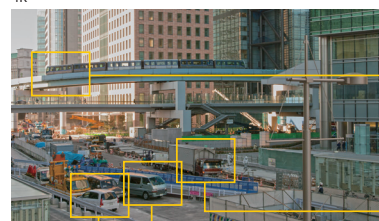
**Areas of Interest**  
• 4K high image quality

**Other Areas of Image**  
• Low image quality  
• High compression ratio

Intelligent Coding

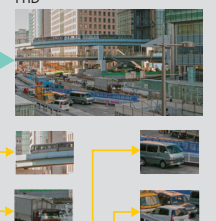
- **Intelligent Cropping** to simultaneously observe up to four specific areas or 'regions' of interest in any captured images with a 4K-native resolution, while viewing the entire image in Full HD resolution, allowing the network bandwidth to be reduced by up to 50%, therefore helping to minimize storage costs

#### Captured Image 4K



Simulated image

#### Overview FHD



**Close-up**  
• 4K-native resolution  
• VGA x4

Intelligent Cropping

- **Multi Tracking** to automatically track objects specified by the Intelligent Coding or Intelligent Cropping function – a compelling alternative to conventional monitoring that normally requires multiple PTZ cameras to track several objects simultaneously
- **Evidence Shot** for high-quality still-image recording with 20 megapixel resolution to help examine the scene and produce evidence – ideal for collection and analysis of high-quality evidence in situations like city surveillance, parking lots and garages

### OTHER KEY FEATURES

- Built-in IR (infrared) illuminators
- Adaptive IR
- IK10-rated impact resistant
- IP66 rated water resistant
- Edge Storage (onboard recording with memory cards)
- 90dB Wide Dynamic Range (View-DR™) Technology
- Visibility Enhancer (VE)
- True D/N (Day/Night)
- Supports VBR (variable bit rate) with cap or CBR selectable
- Powered by either IEEE 802.3af-compliant (PoE) Class 3 system, DC 12 V ±10%, or AC 24 V ±20%
- DEPA™ Advanced Intelligent Video Analytics
- Defog Image Processing
- Highlight Compensation
- Optical Image Stabilizer
- SNC toolbox mobile to adjust of field of view with a smartphone, tablet or PC
- HDMI interface support
- ONVIF™ (Open Network Video Interface Forum) Profile S firmware



# SPECIFICATIONS

SNC-VM772R	
<b>Camera</b>	
Image Sensor	1.0-type progressive scan Exmor R CMOS sensor
Number of Effective Pixels	Approx. 20 Megapixels
Sync System	Internal synchronization
Minimum Illumination (50 IRE)	Color: 0.1 lx (F1.8, 1/30 s) B/W: 0 lx (IR LED On, F1.8, 1/30 s)
Minimum Illumination (30 IRE)	Color: 0.06 lx (F1.8, 1/30 s) B/W: 0 lx (IR LED On, F1.8, 1/30 s)
Wide Dynamic Range	Equivalent to 90 dB with View-DR Technology
Gain	Auto/Manual (0 dB to +48 dB)
Shutter Speed	1/1 s to 1/10,000 s
Exposure Control	Exposure compensation, AGC, Shutter speed, Iris
White Balance	ATW, ATW-PRO, Fluorescent lamp, Mercury lamp, Sodium vapour lamp, Metal halide lamp, White LED, One push WB, Indoor, Outdoor, Manual
Lens	Built-in zoom lens
Easy Zoom	Yes
Zoom Ratio	Optical zoom 2.9x Clear image zoom 2.0x Digital zoom 2.0x Total zoom 11.6x
Easy Focus for Setup	Yes
Horizontal Viewing Angle (4K) (20MP)	70.7 ° to 27.5 ° (16:9 aspect ratio) 76.6 ° to 29.8 ° (3:2 aspect ratio)
Vertical Viewing Angle	39.9 ° to 15.7 ° (16:9 aspect ratio) 51.5 ° to 20.1 ° (3:2 aspect ratio)
Focal Length	f = 8.8 mm to 25.7 mm
F-Number	F1.8 (Wide) to F2.8 (Tele)
Minimum Object Distance	300 mm
Par/Tilt/Rotation Angle (manual)	±192 ° -10 ° to +81 ° -100 ° to +100 °
IR Illuminator	Yes Wave length (typical): 850 nm, IR LED: 30 pieces
IR Working Distance	50 m (164.0 feet) (30 IRE)
<b>Camera Features</b>	
Day/Night	True D/N
Day/Night linked with Easy Focus	Yes
e-Flip	Yes
Wide-D	View-DR Technology
Tone Correction	Visibility Enhancer
Defog Image Processing	Yes
Highlight Compensation	Yes
Flicker Reduction	Yes
Distortion Correction	Yes
Noise Reduction	XDNR™ Technology
Image Stabilizer	Optical
Intelligent Scene Capture	Yes
Privacy Masking (number)	24
Privacy Masking (shape)	Quadrangle formed by any four corner points
Privacy Masking (color/effect)	Opaque 14 colors (Black, White, Red, Green, Blue, Cyan, Yellow, Magenta, Gray (6 scales)), Mosaic
Edge Storage	Yes
Vandal Resistant	IK10
Ingress Protection	IP66
Superimpose Number	4 independent positions for characters (Codec, Date & Time, Event, Text (Max. 64 characters)), 1 independent position for a logo mark
Superimpose Language	English
Menu Language	English, Japanese, Chinese (simplified), Chinese (traditional), French, Spanish, German, Italian, Korean, Portuguese, Russian, Arabic, Hindi, Vietnamese, Thai, Turkish, Polish
<b>Video</b>	
Resolution	5472 x 3648, 3840 x 2160, 2880 x 2160, 1920 x 1080, 1440 x 1080, 1440 x 960, 1280 x 720, 960 x 720, 640 x 480, 640 x 360, 320 x 240, 320 x 180
Compression Format	H.264 (High/Main Profile), JPEG H.264 (B-picture) is supported for 3840 x 2160 and 2880 x 2160 resolution
Maximum Frame Rate	H264: 30 fps (3840 x 2160)/10 fps (1920 x 1080) JPEG: 2.5 fps (5472 x 3648)
Bitrate Compression Mode	CBR/VBR with Cap. (selectable)
Range of Bit Rate Setting	64 Kbps to 32 Mbps
Intelligent Cropping (Mode)	Dynamic/Static
Intelligent Cropping (Number)	2 (1920 x 1080), 4 (640 x 480)
Intelligent Coding (Mode)	Auto/Manual
Intelligent Coding (Number)	Up to 8 (up to 4 for Auto mode)
Evidence Shot	20 Megapixels (5472 x 3648)
Multi Streaming Capability	Yes (5)
Number of Clients	20
<b>Intelligent Video/Audio Analytics</b>	
Analytics Architecture	DEPA Advanced
Intelligent Motion Detection	Yes
Face Detection	Yes
Tamper Alarm	Yes
Scene Analytics	Entering, Passing, Loitering, Exiting, Counting, Object Removed, Object Left Behind
Multi Tracking	Up to 4

## 4K ACCESSORIES



### UNI-MDPVM772

- Pendant cap
- Planned availability - September 2015



- 1" cap is removable from pendant cap



### UNI-WMB7

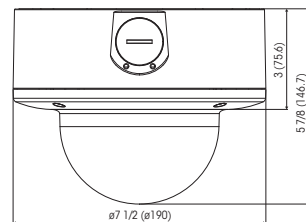
- Wall mount bracket
- Planned availability - October 2015



- UNI-MDPVM772 shown with optional UNI-WMB7 wall mount bracket

SNC-VM772R	
<b>Audio</b>	
Compression Format	G.711 (bit rate: 64 kbps, sampling frequency: 8 kHz) G.726 (bit rate: 40, 32, 24, 16 kbps, sampling frequency: 8 kHz) AAC-LC (bit rate: 64 kbps, sampling frequency: 16 kHz) AAC-LC (bit rate: 128 kbps, sampling frequency: 48 kHz)
<b>System Requirements</b>	
Operating System	Windows® 7 (32/64 bit) Ultimate, Professional Edition, Windows 8 Pro (32/64 bit), Windows 8.1 Pro (32/64 bit)
Processor	Intel Core i7 3.4GHz or higher* *For 4K (3840 x 2160) output at 30 fps, a GPU capable of 3840 x 2160 resolution and decoding 4K/H.264 is required.
Memory	8 GB or more
Web Browser	Microsoft Internet Explorer® Ver. 8.0, Ver. 9.0, Ver. 10.0, Ver. 11.0 Firefox® Ver. 29.0 Safari® Ver. 5.34 Google Chrome® Ver. 39.0
SNC toolbox	Yes
SNC toolbox mobile	Yes
<b>Network</b>	
Protocols	IPv4, IPv6, TCP, UDP, ARP, ICMP, ICMPv6, IGMP*, MLD*, HTTP, DHCP, DHCPv6, DNS, NTP, RTP/RTCP, RTPS over TCP, SMTP (client), HTTPS, FTP (client), SNMP (v1, v2c, v3), TLS (v1.0) *SSM (Source Specific Multicast) is supported.
Number of IP Address/Mac ADDRESS	1
QoS	DSCP
Multicast Streaming Support	Yes
ONVIF Conformance	Profile S
Wireless Network	Yes for setup (IEEE802.11b/g/n with optional IFU-WLM3)
Authentication	IEEE802.1X
<b>Interface</b>	
Analog Video Output	No
Analog Monitor Output for Setup	No
Digital Video Output	HDMI (type A) x1
Microphone Input	Mini jack (monaural, 2.2 kΩ, plug-in-power)
Line Input	Mini jack (monaural)
Line Output	No* *Supported by future version-up
Network Port	10BASE-1/100BASE-TX (RJ-45)
Alarm Input (Sensor Input)	x2, make contact, break contact
Alarm Output	x2, Max. AC 12 VDC 24 V, 0.4 A (solid-state relay outputs electrically isolated from the camera)
Wireless LAN Terminal	Yes
Card Slots	SD x1
Confirmed SD Card Type	SDHC/SDXC (Max. 128 GB)
SD Off Switch	Yes
<b>General</b>	
Power Requirements	IEEE 802.3af compliant (PoE) Class 3, DC 12 V ± 10 %, AC 24 V ± 20 %, 50/60 Hz
Power Consumption	Max. 12.95 W
Operating Temperature	-40 °F to +122 °F (-40 °C to +50 °C)
Cold Start Temperature	-40 °F to +122 °F (-40 °C to +50 °C)
Storage Temperature	-4 °F to +140 °F (-20 °C to +60 °C)
Operating Humidity	20 % to 90 % (no condensation)
Storage Humidity	20 % to 80 % (no condensation)
Built-in Heater	Yes
Dimensions (W x H x D)	ø7 1/2 inches x 5 7/8 inches (ø190 x 146.7 mm)
Weight	Approx. 4 lb 3 oz (1900 g) Approx. 4 lb 10 oz (2100 g) (with Bracket)
<b>External Material</b>	
Upper case: AL Die-cast	
Lower case: AL Die-cast	
Dome cover: PC	
Cap: PC	
<b>External Color</b>	
Munsell 4.48G 8.4/D 2 (White)	
Fire Retardant	UL2044
<b>Safety Regulations</b>	
JATE Technical Standard (LAN)	
UL2044, IEC/EN60950-1 (CB)	
VCCI (Class A), FCC (Class A), IC (Class A)	
Emission: EN55022 (Class A)	
Immunity: EN55024 + EN50130-4	
Emission: AS/NZS CISPR22 (Class A)	
MSIP	
EMC-TR	
<b>Supplied Accessories</b>	
Bracket (1), Template (1), Wrench (1), Screw (M4 x 8) (1), Sealing rubber (1), Multi connector cable (1), Read This First (1), Safety Regulations (1), Warranty booklet (1)	
<b>Optional Accessories</b>	
IFU-WLM3 (USB wireless LAN module)	

## DIMENSIONS



Unit: inches (mm)

©2015 Sony Electronics Inc. All rights reserved.

Reproduction in whole or in part without permission is prohibited. Features and specifications are subject to change without notice. Weights and dimensions are approximate.

Sony, Exmor, View-DR, XDNR, ONVIF, DEPA and the Sony logo are trademarks of Sony. All other trademarks are the property of their respective owners.

Sony Electronics Inc.  
1 Sony Drive  
Park Ridge, NJ 07656  
sony.com/4Ksecurity

S-IP2210-A (MK11193V2)

Printed in USA (8/15)